

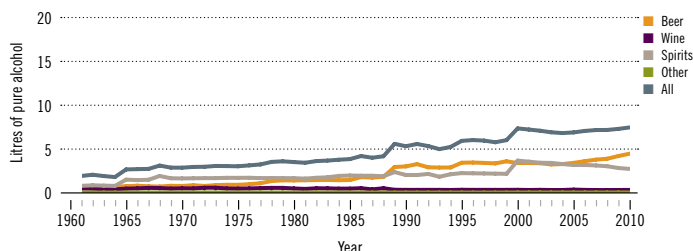
Brazil

Total population: 195 000 000 > Population aged 15 years and older (15+): 75% > Population in urban areas: 87% > Income group (World Bank): Upper middle income

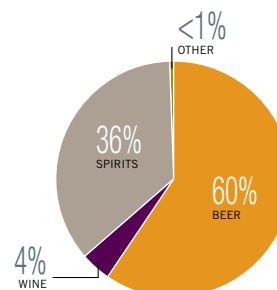
ALCOHOL CONSUMPTION: LEVELS AND PATTERNS

Recorded alcohol per capita (15+) consumption, 1961–2010

Data refer to litres of pure alcohol per capita (15+).



Recorded alcohol per capita (15+) consumption (in litres of pure alcohol) by type of alcoholic beverage, 2010



Alcohol per capita (15+) consumption (in litres of pure alcohol)

	Average 2003–2005	Average 2008–2010	Change
Recorded	6.8	7.2	→
Unrecorded	3.0	1.5	↘
Total	9.8	8.7	↘
Total males / females		13.6 / 4.2	
WHO Region of the Americas	9.2	8.4	

Total alcohol per capita (15+) consumption, drinkers only (in litres of pure alcohol), 2010

Males (15+)	19.6
Females (15+)	8.9
Both sexes (15+)	15.1

Prevalence of heavy episodic drinking* (%), 2010

	Population	Drinkers only
Males (15+)	20.7	29.9
Females (15+)	5.2	11.1
Both sexes (15+)	12.7	22.1

*Consumed at least 60 grams or more of pure alcohol on at least one occasion in the past 30 days.

Abstainers (%), 2010

	Males	Females	Both sexes
Lifetime abstainers (15+)	12.4	30.8	21.9
Former drinkers* (15+)	18.3	22.4	20.4
Abstainers (15+), past 12 months	30.7	53.2	42.3

*Persons who used to drink alcoholic beverages but have not done so in the past 12 months.

Patterns of drinking score, 2010

LEAST RISKY < 1 2 3 4 5 > MOST RISKY

HEALTH CONSEQUENCES: MORTALITY AND MORBIDITY

Age-standardized death rates (ASDR) and alcohol-attributable fractions (AAF), 2012

	ASDR*		AAF (%)	
	28.8	5.8	62.6	60.2
Liver cirrhosis, males / females	28.8	5.8	62.6	60.2
Road traffic accidents, males / females	52.5	11.3	18.0	5.2

*Per 100 000 population (15+).

Prevalence of alcohol use disorders and alcohol dependence (%), 2010*

	Alcohol use disorders**	Alcohol dependence
Males	8.2	3.9
Females	3.2	1.8
Both sexes	5.6	2.8
WHO Region of the Americas	6.0	3.4

*12-month prevalence estimates (15+).

**Including alcohol dependence and harmful use of alcohol.

Years of life lost (YLL) score*, 2012

LEAST < 1 2 3 4 5 > MOST

*Based on alcohol-attributable years of life lost.

POLICIES AND INTERVENTIONS

Written national policy (adopted/revised) / National action plan	Yes (2003/2007) / Yes
Excise tax on beer / wine / spirits	Yes / Yes / Yes
National legal minimum age for off-premise sales of alcoholic beverages (beer / wine / spirits)	18 / 18 / 18
National legal minimum age for on-premise sales of alcoholic beverages (beer / wine / spirits)	18 / 18 / 18
Restrictions for on-/off-premise sales of alcoholic beverages: Hours, days / places, density Specific events / intoxicated persons / petrol stations	No, No / No, No Yes / Yes / Yes

National maximum legal blood alcohol concentration (BAC) when driving a vehicle (general / young / professional), in %	0.02 / 0.02 / 0.02
Legally binding regulations on alcohol advertising / product placement	Yes / Yes
Legally binding regulations on alcohol sponsorship / sales promotion	No / No
Legally required health warning labels on alcohol advertisements / containers	Yes / Yes
National government support for community action	Yes
National monitoring system(s)	Yes